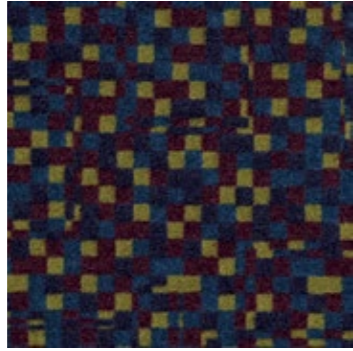


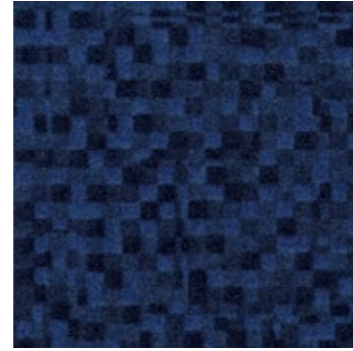


Design Unlimited – F

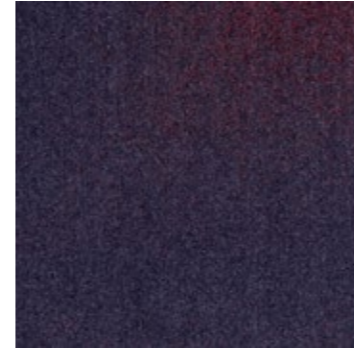
Interface®



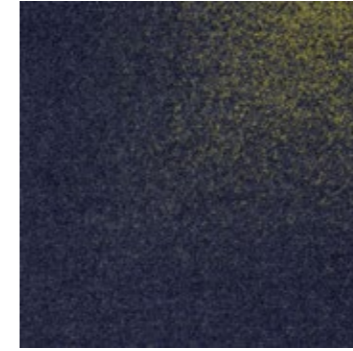
F-01



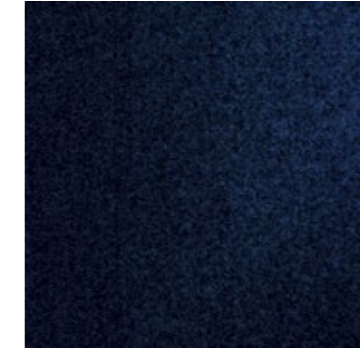
F-02



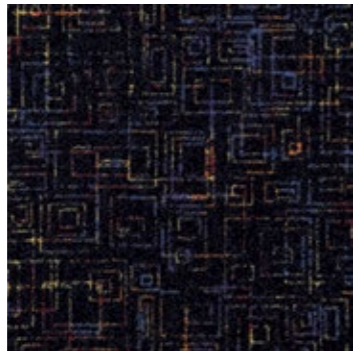
F-03



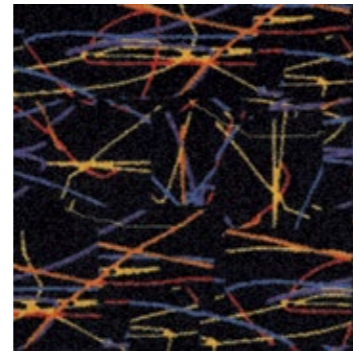
F-04



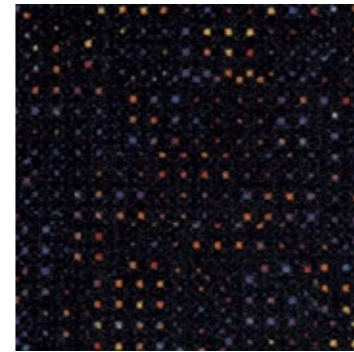
F-05



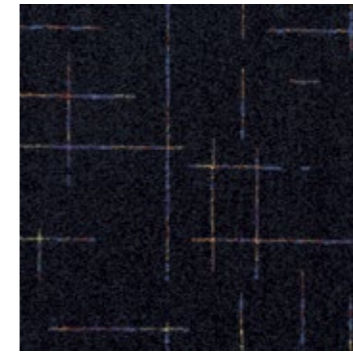
F-06



F-07



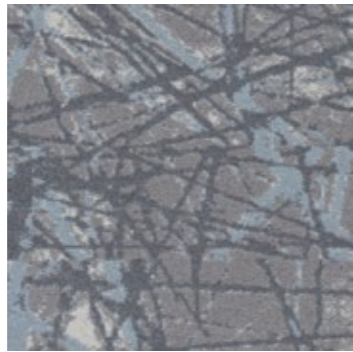
F-08



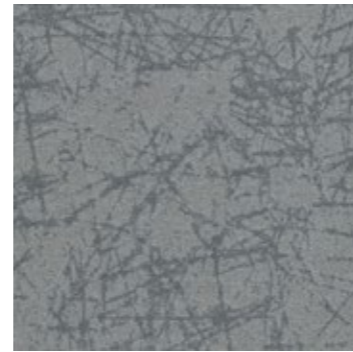
F-09



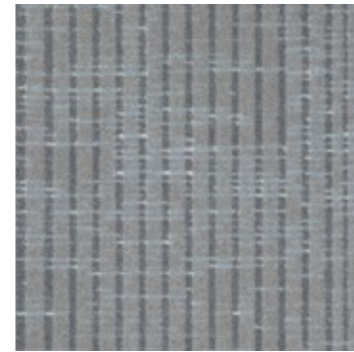
F-10



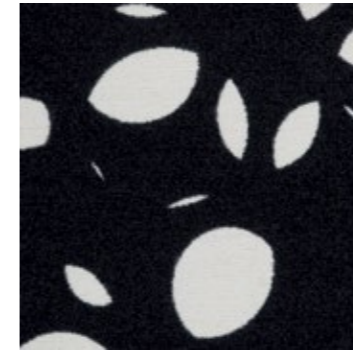
F-11



F-12



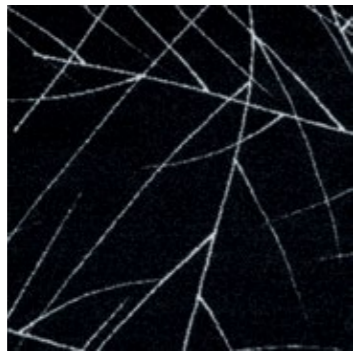
F-13



F-14



F-15



F-16



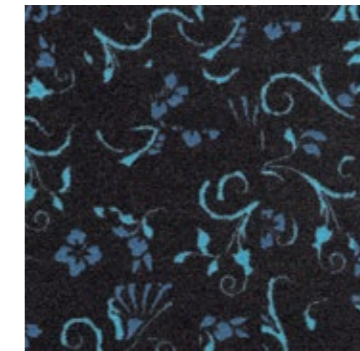
F-17



F-18

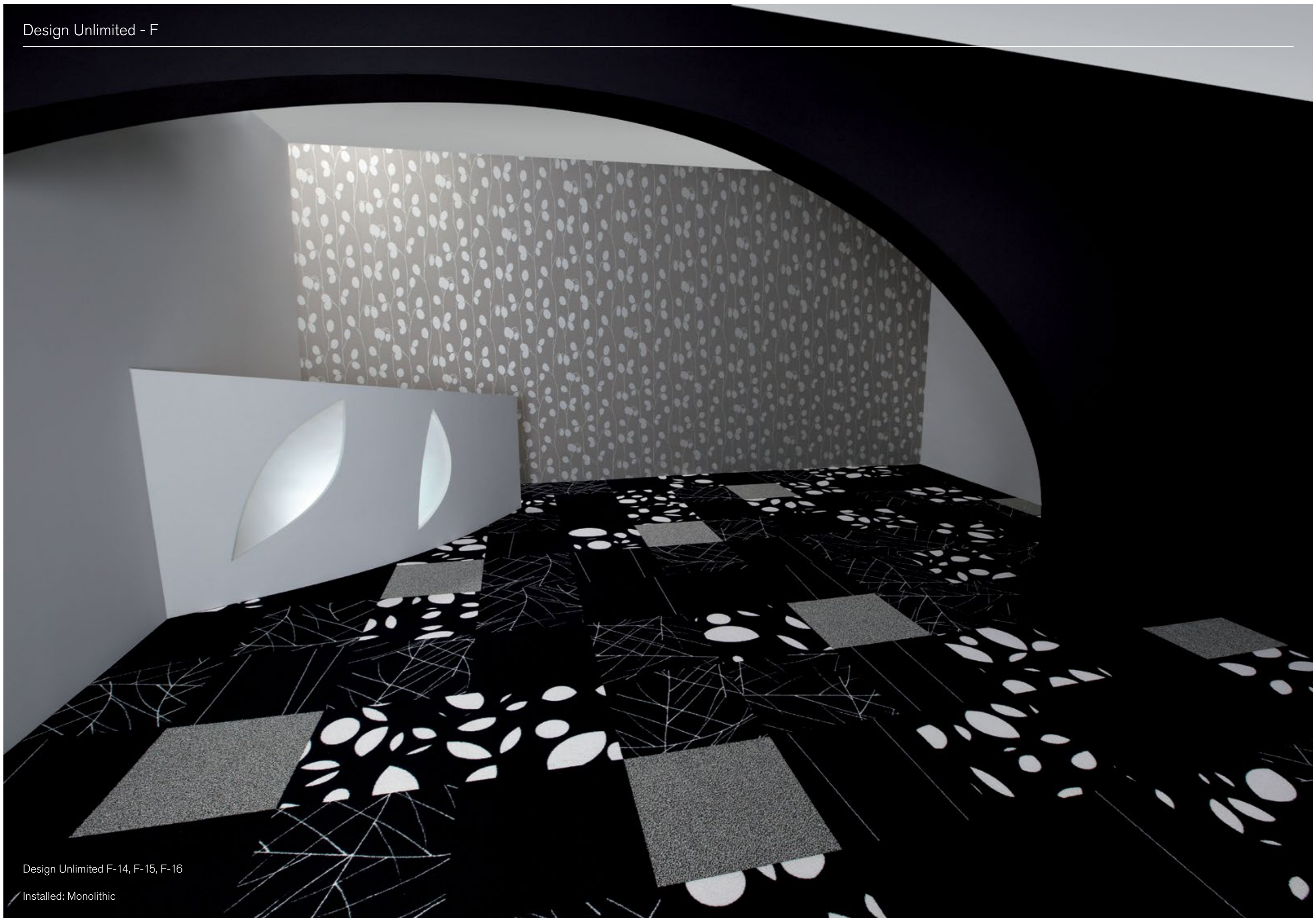


F-19



F-20





Product Definition	Tufted Patterned Level Cut Tile
Konstruktion	Bedruckte Veloursqualität
Descripción	Moqueta modular tufting pelo cortado con diseño
Description	Dalle de moquette à velours tufté coupé à motifs
Type	Getufte gedessineerde velours
Descrizione	Velluto tufted

Pile Material	100% Nylon
Polfasermaterial	100% Polyamid
Composición Fibra	100% Poliamida
Composition	100% Polyamide
Poolmateriaal	100% Polyamide
Fibra	100% Poliammide

Pile Yarn Weight / Poleinsatzgewicht / Peso Fibra / Poids de fibre / Poolinzetgewicht / Peso Felpa	1180g/m ² ± 10%
Total Weight / Gesamtgewicht / Peso Total Poids total / Totaalgewicht / Peso Totale	4665g/m ² ± 5%
Pile Height / Polschichtdicke / Altura Fibra / Hauteur de la fibre / Poolhoogte / Altezza Felpa	4,0 mm ± 0,3 mm
Total Thickness / Gesamtdicke / Espesor Total / Epaisseur totale / Totale dikte / Altezza Totale	7,5 mm ± 0,3 mm
Gauge/Ends 10 cm / Teilung x 10 cm / Galga x 10 cm / Jauge-Rangs par 10 cm / Rijen per 10 cm / Serraggio x 10 cm	1/10 – 40
Tufts per m² / Noppenzahl/m ² / Puntadas m ² / Densité du tuft par m ² / Aantal noppen per m ² / Densità Punti	172,000 ± 5%
Backing Type / Rückenkonstruktion / Soporte / Sous-couche / Ruguitvoering / Sottofondo	Graphlex®
Wear Classification / Beanspruchungsklasse / Clasificación al tráfico / Classement Gebruiksintensiteit / Resistenza all'usura	Heavy Contract (EN 1307) Class 33 / LC5

Style	60377
4m ² - 16 tiles per box (50 x 50 cm ± 0,2%)	

Radiant Panel / Schwerentflammbarkeit	(EN ISO 9239/1) Euroclass Cfl s1 (EN ISO 13501)
Hot Metal Nut	Pass, low radius of effects of ignition (BS 4790)
Dimensional Stability / Dimensionsstabilität / Estabilidad Dimensional / Stabilité dimensionnelle / Dimensionele stabiliteit / Test Stabilità dimensionale	≤ 0,2% (ISO 2551 / EN 986)

Sound Absorption					
125Hz	250Hz	500Hz	1000Hz	2000Hz	4000Hz
0.01	0.03	0.08	0.17	0.33	0.48

EN 14041

DOP: 1037/112740
textile floor covering
EN 1307

Cert. ENP 477

Monolithic

27dB ≥ 2,4 6-7 0,20

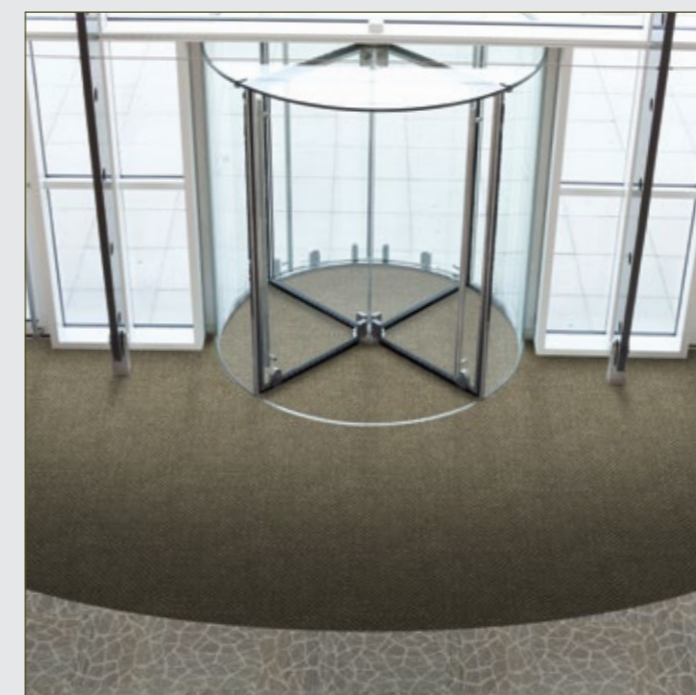
E74F90F2

More details see glossary page 462 or www.Interface.com



TacTiles™

- A smarter, more sustainable way to install carpet tiles
- No need for liquid adhesives
- Fitting tiles is quick, clean and easy and the process virtually eliminates emissions
- No damage to sub floors, and nothing to stop you lifting or moving the carpet whenever you want



Entrance Matting

Incredibly tough, hard-wearing and practical; indoor entrance matting acts as the first line of defence to any interior by removing almost 100% of dirt, rain and mud before it's walked into your flooring.

Both of the products in our commercial entrance matting range – Barricade and Foyer – are resilient, functional, easy to maintain and stylish. And it's for these reasons that our barrier matting forms an essential part of any maintenance programme needed to keep your floorcovering looking its very best.