

# Furrows II



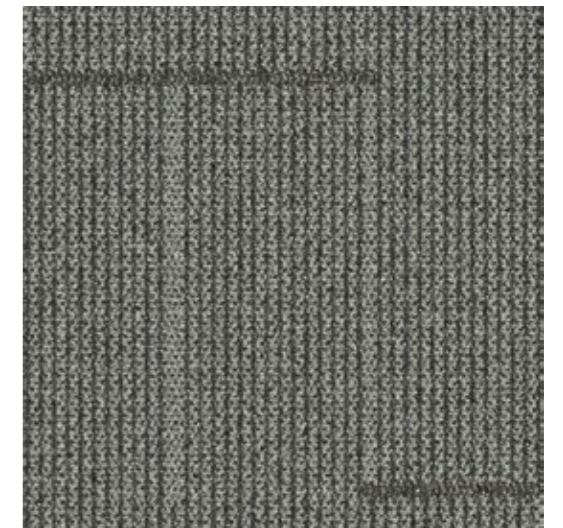
303428 Sesame



303429 Buckwheat



303432 Hemp



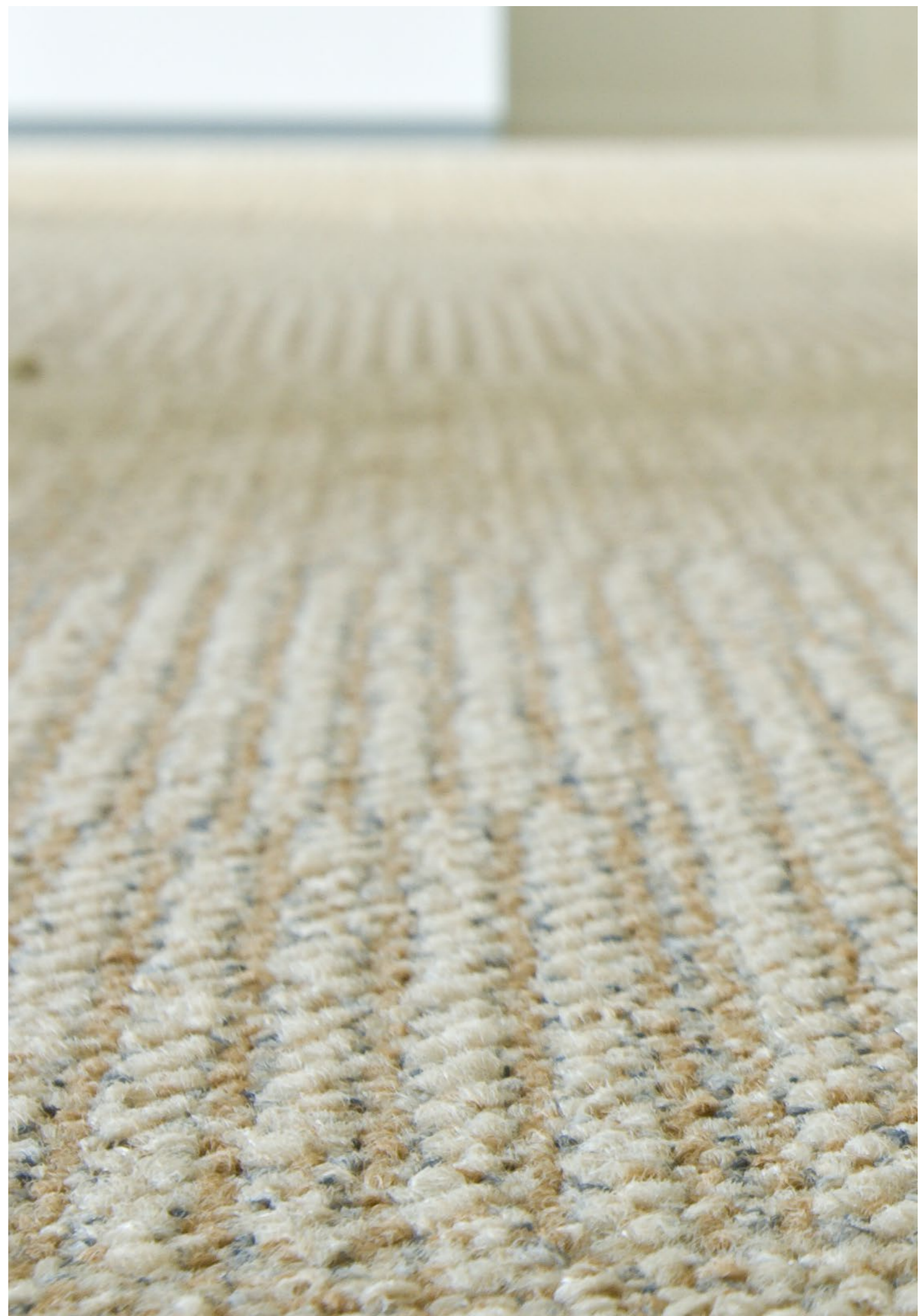
303434 Black Pepper





303429 Buckwheat

Installed: Monolithic





<b>Product Definition</b>	Tufted Patterned Structured Loop Tile
Konstruktion	Tuftgemusterte strukturierte Schlingenqualität
Descripción	Moqueta modular tufting bucle estructurado con diseño
Description	Dalle de moquette à velours tufté bouclé structuré
Type	Getufte gedessineerde gestructureerde bouclé
Descrizione	Bouclé tufted strutturato

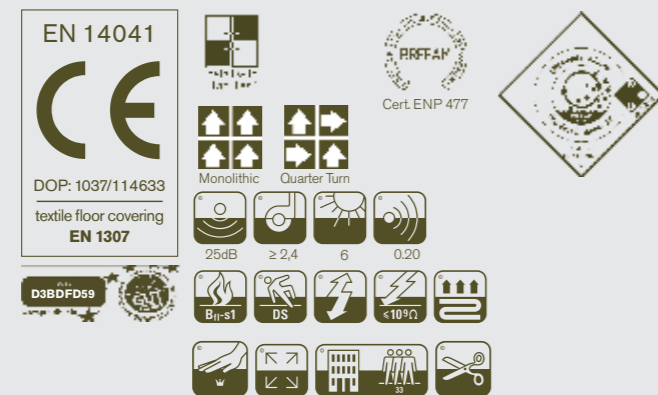
<b>Pile Material</b>	100% BCF Solution Dyed Nylon contains pre-consumer recycled content
Polfasermaterial	100% Polyamid garnefärbt mit recyceltem Anteil (Prä-Konsumenten-Anteil)
Composición Fibra	100% Poliamida BCF tintada en masa con contenido reciclado pre-consumo
Composition	100% Polyamide BCF Teint en masse contenant des éléments recyclés
Poolmateriaal	100% Solution Dyed Polyamide BCF, bevat pre-consumer gerecycled content
Fibra	100% Poliammide BCF tinta in massa con contenuto riciclato pre - consumer

<b>Pile Yarn Weight</b> / Poleinsatzgewicht / Peso Fibra / Poids de fibre / Poolinzetgewicht / Peso Felpa	520g/m <sup>2</sup> ± 5%
<b>Total Weight</b> / Gesamtgewicht / Peso Total Poids total / Totaalgewicht / Peso Totale	4374g/m <sup>2</sup> ± 5%
<b>Pile Height</b> / Polschichtdicke / Altura Fibra / Hauteur de la fibre / Poolhoogte / Altezza Felpa	3,0 mm ± 0,3 mm
<b>Total Thickness</b> / Gesamtdicke / Espesor Total / Epaisseur totale / Totale dikte / Altezza Totale	6,4 mm ± 0,5 mm
<b>Gauge/Ends 10 cm</b> / Teilung x 10 cm / Galga x 10 cm / Jauge-Rangs par 10 cm / Rijen per 10 cm / Serraggio x 10 cm	1/12 – 47,2
<b>Tufts per m<sup>2</sup></b> / Noppenzahl/m <sup>2</sup> / Puntadas m <sup>2</sup> / Densité du tuft par m <sup>2</sup> / Aantal noppen per m <sup>2</sup> / Densità Punti	151,040 ± 5%
<b>Backing Type</b> / Rückenkonstruktion / Soporte / Sous-couche / Ruguitvoering / Sottofondo	Graphlex®
<b>Wear Classification</b> / Beanspruchungsklasse / Clasificación al tráfico / Classement Gebruiksintensiteit / Resistenza all'usura	Heavy Contract (EN 1307) Class 33 / LC 1

<b>Style</b>	30342
4m <sup>2</sup> - 16 tiles per box (50 x 50 cm ± 0,15%)	

<b>Radiant Panel</b> / Schwerentflammbarkeit	(EN ISO 9239/1) Euroclass Bfl s1 (EN ISO 13501)
<b>Hot Metal Nut</b>	Pass, low radius of effects of ignition (BS 4790)
<b>Dimensional Stability</b> / Dimensionsstabilität / Estabilidad Dimensional / Stabilité dimensionnelle / Dimensionale stabiliteit / Test Stabilità dimensionale	≤ 0,2% (ISO 2551 / EN 986)

<b>Sound Absorption</b>					
<b>125Hz</b>	<b>250Hz</b>	<b>500Hz</b>	<b>1000Hz</b>	<b>2000Hz</b>	<b>4000Hz</b>
0.01	0.05	0.08	0.22	0.34	0.44



## Light Value

Product	Colour No	Colour Name	L Value*	Y Value*
<b>Furrows II</b>	303428	Sesame	53.9	21.9
	303429	Buckwheat	47.9	16.7
	303432	Hemp	33.5	7.8
	303434	Black Pepper	39.5	10.9

\* **Light Value:** L Value = L according to CIE L\*a\*b\* colour space, Y Value = Light Reflectance Value according to BS 8493  
**Lichtreflexionswerte:** L-Wert = L gemäß CIE L\*a\*b\* Farbspektrum, Y-Wert = Lichtreflexionswert gemäß British Standard BS 8493  
**Valores de Reflectancia de Luz:** Valor L= L según CIE L\*a\*b\* espacio de color, Valor Y = Valor de reflectancia de luz según el estándar británico BS 8493  
**Valeurs concernant la lumière:** Valeur L = L faisant référence à la méthode CIE L\*a\*b\* pour la couleur, Valeur Y = Valeurs de réflectance de la lumière selon le British Standard BS 8493  
**Licht waarden:** L Waarde = L volgens CIE L\*a\*b\*kleurruimte, Y Waarde = Licht Reflectie Waarde volgens BS 8493  
**Indici di riflettanza alla luce:** Indice L= L secondo CIE L\*a\*b\* colour space, IndiceY= Indice di riflettanza alla luce secondo la norma BS 8493

# Environmental Data Sheet

Construction			
Yarn system	100% BCF Solution Dyed PA 6,6		
Backing system	Graphlex®		
Recycled Content	Total Recycled Content	Pre consumer	Post consumer
Product average	<b>44,89%</b>	44,89%	0,00%
Yarn average	<b>21,55%</b>	21,55%	0,00%
Recycled content can be subject to differences between colours. See details for individual colours on next page.			
Carbon Footprint			
Global Warming Potential (kgs CO2 equivalents/sq meter)			
Full life-cycle carbon footprint (following our EPD results or EPD calculation method)	Raw materials and Production:	8.3 kg CO <sub>2</sub> eq./m <sup>2</sup>	
	Delivery and installation:	0.32 kg CO <sub>2</sub> eq./m <sup>2</sup>	
	Use (10 years):	2 kg CO <sub>2</sub> eq./m <sup>2</sup>	
	End of life (waste to energy):	4.6 kg CO <sub>2</sub> eq./m <sup>2</sup>	
TOTAL (10 years' lifetime):		15.22 kg CO <sub>2</sub> eq./m <sup>2</sup>	
CO <sub>2</sub> compensation	Carbon neutral Cool Carpet® is optional		
Manufacturing			
Location	Scherpenzeel, NL Factory is certified ISO 14001 since 1996 and ISO 9001 since 1990		
Installation Impacts			
TacTiles™	Optimised for glue-free installation with TacTiles™ connectors with virtually zero VOCs		
Installation Waste	In a typical installation* using the installation method below:		
	Quarter turn – 3-4% installation waste		
	Monolithic - 3-4% installation waste		
For reference: 2 metre wide broadloom typically generates 7-10 % installation waste			
* In a rectangular building, installed before walls.			
End-of-life			
Alternatives to landfill	Reuse: Can be cleaned and reused in a non-critical location to extend its useful life		
	Recycling: Can be returned through the Interface ReEntry scheme and be re-used as raw material in new carpet tiles		
	Waste-to-Energy: Can be incinerated in appropriate waste to energy plant		
Indoor Air Quality			
GUT (Gemeinschaft umweltfreundlicher Teppichboden)	The product passes all requirements of GuT's testing criteria regarding hazardous substances, emissions and odour. GUT PRODIS Certificate no. D3BDFD59		
CRI (Carpet & Rug Institute)	Compliant to LEED IQ 4.3 credit (tested in Eurofins to the equivalent test of the CRI Green Label Plus)		
Compliance to Green Building Schemes			
See next page to check how our products contribute to the main green building certification schemes (BREEAM, LEED, HQE and DGNB)			
Type III Environmental Product Declaration			
EPD according to ISO 14025	This product has a type III Environmental Product Declaration, <a href="#">EPD-IFF-2011711-E</a>		

Recycled content – colour level						
Colourway	Total recycled content	Pre consumer recycled content	Post consumer recycled content	Yarn recycled content	Yarn pre consumer recycled content	Yarn post consumer recycled content
303428 Sesame	44,85%	44,85%	0,00%	21,19%	21,19%	0,00%
303429 Buckwheat	44,85%	44,85%	0,00%	21,21%	21,21%	0,00%
303432 Hemp	44,96%	44,96%	0,00%	22,17%	22,17%	0,00%
303434 Blackpepper	44,90%	44,90%	0,00%	21,62%	21,62%	0,00%
Compliance to Green Building Schemes						
BREEAM (UK and international)	<b>BRE Green Guide Ratings:</b> <b>Office - A rated</b> <b>Education - A rated</b> <b>Health Care - A rated</b> <b>Retail (by fashion) - A+ rated</b> Potential contribution to following categories and credits: Hea 02 - Indoor air quality – minimising sources of air pollution Hea 05 - Acoustic Performance Mat 01 - Life Cycle Impacts Mat 05 - Designing for robustness Wst 01 - Construction Waste Management					
LEED 2009 US	Potential direct or indirect contribution to following categories and credits: Indoor Environmental Quality Credit 4.1 Low Emitting Materials: Adhesive & Sealants Credit 4.3 Low Emitting Materials: Carpet Systems Materials and Resources Credit 2.1 Construction Waste Management Credit 4.1 Recycled content Credit 5.1 Regional Materials Innovation and Design Credits 1-4 1 Pilot Credit 43, Certified Products					
HQE (FR)	Potential direct or indirect contribution to several points within following targets: 2. Integrated choice of products and construction materials 3. Low site nuisance 9. Acoustic comfort 10. Visual comfort 11. No unpleasant smells 12. Sanitary quality of areas 13. Sanitary air quality					
DGNB (D)	Potential direct or indirect contribution to following criterion ENVIRONMENTAL QUALITY ENV1.2 Local Environmental Impact ECONOMIC QUALITY ECO1.1 Building-Related Lifecycle Costs ECO2.1 Efficient Use of Space SOCIOCULTURAL AND FUNCTIONAL QUALITY SOC1.2 Indoor Air Quality SOC1.3 Acoustic Comfort TECHNICAL QUALITY TEC1.5 Ease of Cleaning and Maintenance TEC1.6 Ease of Dismantling and Recycling					



## TacTiles™

---

- A smarter, more sustainable way to install carpet tiles
- No need for liquid adhesives
- Fitting tiles is quick, clean and easy and the process virtually eliminates emissions
- No damage to sub floors, and nothing to stop you lifting or moving the carpet whenever you want



## Entrance Matting

---

Incredibly tough, hard-wearing and practical; indoor entrance matting acts as the first line of defence to any interior by removing almost 100% of dirt, rain and mud before it's walked into your flooring.

Both of the products in our commercial entrance matting range – Barricade and Foyer – are resilient, functional, easy to maintain and stylish. And it's for these reasons that our barrier matting forms an essential part of any maintenance programme needed to keep your floorcovering looking its very best.