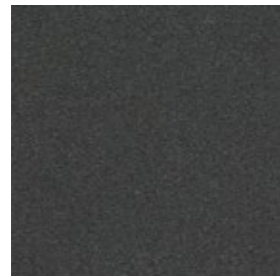


100%
Recycled
Nylon

Heugya 725

Interface®



672501 Graphite



672504 Panther



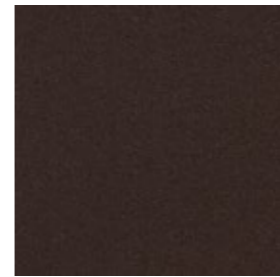
672507 Real Black



672510 Tangerine



672513 Cognac



672516 Chocolate



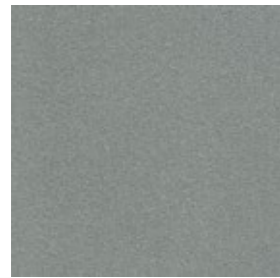
672519 Fresh Cobalt



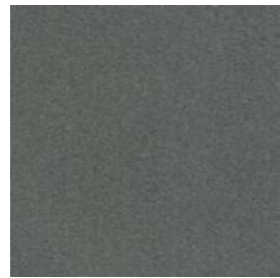
672522 Ocean



672525 Nightsky



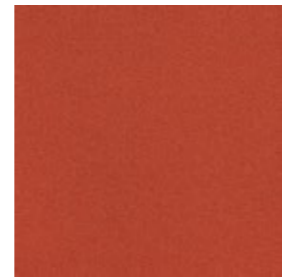
672502 Platin



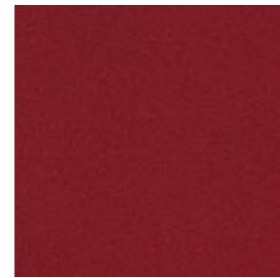
672505 Elephant



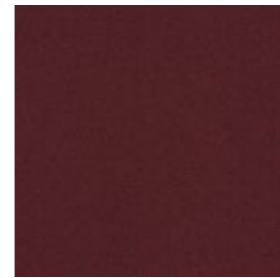
672508 Coal



672511 Orange



672514 Red



672517 Bordeaux



672520 Turquoise



672523 True Blue



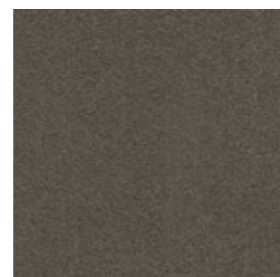
672526 Midnight



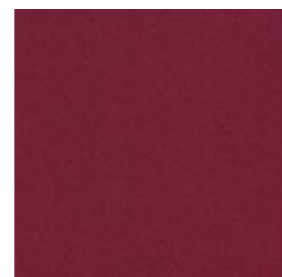
672503 Oyster



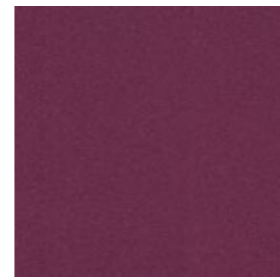
672506 Copra



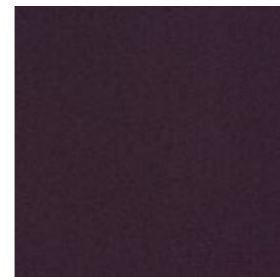
672509 Viper



672512 Cherry



672515 Bougainvillea



672518 Velvet



672521 Spring



672524 Fir



672527 Real Emerald





Heuga 580



672504 Panther, 672505 Elephant, 672507 Real Black & 672514 Red

Installed: Monolithic

Technical Specifications

Product Definition	Tufted Plain Level Cut Tile
Konstruktion	Getuftete Veloursqualität
Descripción	Moqueta modular tufting pelo cortado aspecto velour
Description	Dalle de moquette à velours tufté coupé rasé
Type	Getufte velours
Descrizione	Velluto tufted piano

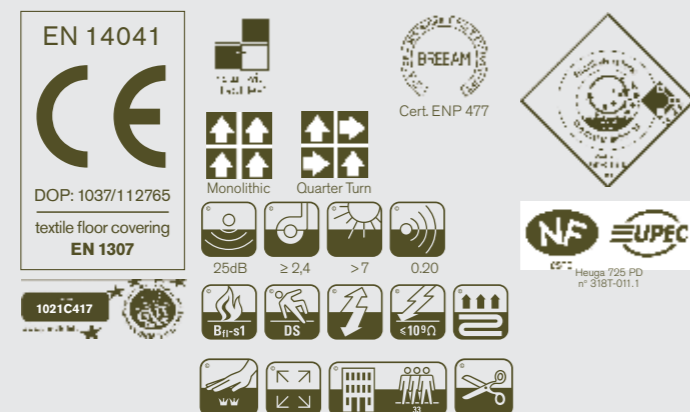
Pile Material	100% BCF Solution Dyed Nylon
Polfasermaterial	100% Polyamid garngefärbt
Composición Fibra	100% Poliamida tintada en masa BCF
Composition	100% Polyamide Teint en massa BCF
Poolmateriaal	100% Solution Dyed Polyamide BCF
Fibra	100% Poliammide tinto in massa BCF

Pile Yarn Weight / Poleinsatzgewicht / Peso Fibra / Poids de fibre / Poolinzetgewicht / Peso Felpa	720g/m ² ± 5%
Effective Pile Yarn Weight / Polschichtgewicht / Peso útil de fibra / Poids de fibre utile Effectief poolgewicht / Peso felpa effettivo	570g/m ² ± 10%
Total Weight / Gesamtgewicht / Peso Total Poids total / Totaalgewicht / Peso Totale	4330g/m ² ± 5%
Pile Height / Polschichtdicke / Altura Fibra / Hauteur de la fibre / Poolhoogte / Altezza Felpa	4,3 mm ± 0,3 mm
Total Thickness / Gesamtdicke / Espesor Total / Epaisseur totale / Totale dikte / Altezza Totale	7,4 mm ± 0,3 mm
Gauge/Ends 10 cm / Teilung x 10 cm / Galga x 10 cm / Jauge-Rangs par 10 cm / Rijen per 10 cm / Serraggio x 10 cm	1/10 – 41
Tufts per m² / Noppenzahl/m ² / Puntadas m ² / Densité du tuft par m ² / Aantal noppen per m ² / Densità Punti	159,900 ± 5%
Backing Type / Rückenkonstruktion / Soporte / Sous-couche / Ruguitvoering / Sottofondo	Graphlex®
Wear Classification / Beanspruchungsklasse / Clasificación al tráfico / Classement Gebruiksintensiteit / Resistenza all'usura	Heavy Contract (EN 1307) Class 33 / LC2

Style	60725
4m ² - 16 tiles per box (50 x 50 cm ± 0,2%)	

Radiant Panel / Schwerentflammbarkeit	(EN ISO 9239/1) Euroclass Bfl s1 (EN ISO 13501)
Hot Metal Nut	Pass, low radius of effects of ignition (BS 4790)
Dimensional Stability / Dimensionsstabilität	≤ 0,2% (ISO 2551)
Estabilidad Dimensional / Stabilité dimensionnelle	
Dimensionele stabiliteit / Test Stabilità dimensionale	

Sound Absorption					
125Hz	250Hz	500Hz	1000Hz	2000Hz	4000Hz
0.03	0.03	0.09	0.24	0.35	0.45



Light Values

Product	Colour No	Colour Name	L Value*	Y Value*
Heuga 725	672501	Graphite	30.4	6.4
	672502	Platin	50.8	19.1
	672503	Oyster	54.1	22.1
	672504	Panther	26	4.7
	672505	Elephant	35.5	8.8
	672506	Copra	37.5	9.8
	672507	Real Black	19	2.7
	672508	Coal	23.4	3.9
	672509	Viper	32.4	7.3
	672510	Tangerine	54.2	22.2
	672511	Orange	38.6	10.4
	672512	Cherry	27.5	5.3
	672513	Cognac	38.8	10.5
	672514	Red	28.6	5.7
	672515	Bougainvillea	27.8	5.4
	672516	Chocolate	19.4	2.9
	672517	Bordeaux	22.3	3.6
	672518	Velvet	18.8	2.7
	672519	Fresh Cobalt	33.1	7.6
	672520	Turquoise	32.9	7.5
	672521	Spring	51.5	19.7
	672522	Ocean	26.9	5.1
	672523	True Blue	30.9	6.6
	672524	Fir	20	3
	672525	Nightsky	24.6	4.3
	672526	Midnight	29.4	6
	672527	Real Emerald	22	3.5

* **Light Value:** L Value = L according to CIE L*a*b* colour space, Y Value = Light Reflectance Value according to BS 8493
Lichtreflexionswerte: L-Wert = L gemäß CIE L*a*b* Farbspektrum, Y-Wert = Lichtreflexionswert gemäß British Standard BS 8493

Valores de Reflectancia de Luz: Valor L = L según CIE L*a*b* espacio de color, Valor Y = Valor de reflectancia de luz según el estándar británico BS 8493

Valeurs concernant la lumière: Valeur L = L faisant référence à la méthode CIE L*a*b* pour la couleur, Valeur Y = Valeurs de réflectance de la lumière selon le British Standard BS 8493

Licht waarden: L Waarde = L volgens CIE L*a*b*kleurruimte, Y Waarde = Licht Reflectie Waarde volgens BS 8493
Indici di riflettanza alla luce: Indice L = L secondo CIE L*a*b* colour space, Indice Y = Indice di riflettanza alla luce secondo la norma BS 8493

Environmental Data Sheet

Construction			
Yarn system	BCF Solution Dyed Nylon (PA6)		
Backing system	Graphlex®		
Recycled Content	Total	Pre Consumer	Post Consumer
Yarn average	100,00%	50,00%	50,00%
Product average	65,13%	56,79%	8,33%
Recycled content can be subject to differences between colours. See details for individual colours on next page.			
Carbon Footprint			
Global Warming Potential (kgs CO2 equivalents/sq meter)			
Full life-cycle carbon footprint (following our EPD results or EPD calculation method)	Raw materials and Production:	7.78 kg CO ₂ eq./m ²	
	Delivery and installation:	0.70 kg CO ₂ eq./m ²	
	Use (10 years):	2.92 kg CO ₂ eq./m ²	
	End of life (waste to energy):	8.57 kg CO ₂ eq./m ²	
	TOTAL (10 years' lifetime):	19.97 kg CO ₂ eq./m ²	
CO ₂ compensation	Carbon neutral Cool Carpet® is standard		
Manufacturing			
Location	Scherpenzeel, NL		
	Factory is certified ISO 14001 since 1996 and ISO 9001 since 1990		
Installation Impacts			
TacTiles™	Optimised for glue-free installation with TacTiles™ connectors with virtually zero VOCs		
Installation Waste	In a typical installation* using the installation method below:		
	Monolithic – 3-5 % installation waste		
	Quarter Turn- 3-5% installation waste		
	For reference: 2 metre wide broadloom typically generates 7-10 % installation waste		
* In a rectangular building, installed before walls.			
End-of-life			
Alternatives to landfill	Reuse: Can be cleaned and reused in a non-critical location to extend its useful life		
	Recycling: Can be returned through the Interface ReEntry scheme and be re-used as raw material in new carpet tiles		
	Waste-to-Energy: Can be incinerated in appropriate waste to energy plant		
Indoor Air Quality			
GUT (Gemeinschaft umweltfreundlicher Teppichboden)	The product passes all requirements of GUT's testing criteria regarding hazardous substances, emissions and odour. GUT PRODIS certificate number: 1021C417		
CRI (Carpet & Rug Institute)	Compliant to LEED IQ 4.3 credit (tested in Eurofins to the equivalent test of the CRI Green Label Plus)		
Compliance to Green Building Schemes			
See next page to check how our products contribute to the main green building certification schemes (BREEAM, LEED, HQE and DGNB)			
Type III Environmental Product Declaration			
EPD according to ISO 14025	This product is covered by the Environmental Product Declaration EPD-IFF-20120019- CBD1-EN		

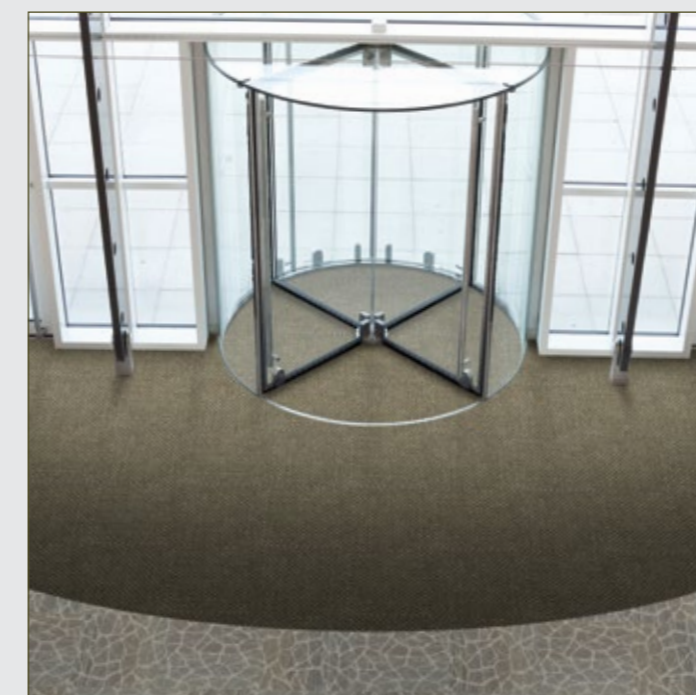
Recycled content – colour level						
Colourway	Total Recycled Content	Pre consumer recycled content	Post consumer recycled content	Total yarn recycled content	Yarn pre-consumer	Yarn post-consumer
672501 Graphite	65,1%	56,8%	8,3%	100,00%	50,00%	50,00%
672502 Platin	65,1%	56,8%	8,3%	100,00%	50,00%	50,00%
672503 Oyster	65,1%	56,8%	8,3%	100,00%	50,00%	50,00%
672504 Panther	65,1%	56,8%	8,3%	100,00%	50,00%	50,00%
672505 Elephant	65,1%	56,8%	8,3%	100,00%	50,00%	50,00%
672506 Copra	65,1%	56,8%	8,3%	100,00%	50,00%	50,00%
672507 Real Black	65,1%	56,8%	8,3%	100,00%	50,00%	50,00%
672508 Coal	65,1%	56,8%	8,3%	100,00%	50,00%	50,00%
672509 Viper	65,1%	56,8%	8,3%	100,00%	50,00%	50,00%
672510 Tangerine	65,1%	56,8%	8,3%	100,00%	50,00%	50,00%
672511 Orange	65,1%	56,8%	8,3%	100,00%	50,00%	50,00%
672512 Cherry	65,1%	56,8%	8,3%	100,00%	50,00%	50,00%
672513 Cognac	65,1%	56,8%	8,3%	100,00%	50,00%	50,00%
672514 Red	65,1%	56,8%	8,3%	100,00%	50,00%	50,00%
672515 Bougainvillea	65,1%	56,8%	8,3%	100,00%	50,00%	50,00%
672516 Chocolate	65,1%	56,8%	8,3%	100,00%	50,00%	50,00%
672517 Bordeaux	65,1%	56,8%	8,3%	100,00%	50,00%	50,00%
672518 Velvet	65,1%	56,8%	8,3%	100,00%	50,00%	50,00%
672519 Fresh Cobalt	65,1%	56,8%	8,3%	100,00%	50,00%	50,00%
672520 Turquoise	65,1%	56,8%	8,3%	100,00%	50,00%	50,00%
672521 Spring	65,1%	56,8%	8,3%	100,00%	50,00%	50,00%
672522 Ocean	65,1%	56,8%	8,3%	100,00%	50,00%	50,00%
672523 True Blue	65,1%	56,8%	8,3%	100,00%	50,00%	50,00%
672524 Fir	65,1%	56,8%	8,3%	100,00%	50,00%	50,00%
672525 Nightsky	65,1%	56,8%	8,3%	100,00%	50,00%	50,00%
672526 Midnight	65,1%	56,8%	8,3%	100,00%	50,00%	50,00%
672527 Real Emerald	65,1%	56,8%	8,3%	100,00%	50,00%	50,00%

Compliance to Green Building Schemes	
BREEAM (UK and international)	<p>BRE Green Guide Ratings: Office - A rated Education - A rated Health Care - A+ rated Retail (by fashion) - A+ rated</p> <p>Potential contribution to following categories and credits: Hea 02 - Indoor air quality – minimising sources of air pollution Hea 05 - Acoustic Performance Mat 01 - Life Cycle Impacts Mat 05 - Designing for robustness Wst 01 - Construction Waste Management</p>
LEED 2009 US	<p>Potential direct or indirect contribution to following categories and credits: Indoor Environmental Quality Credit 4.1 Low Emitting Materials: Adhesive & Sealants Credit 4.3 Low Emitting Materials: Carpet Systems Materials and Resources Credit 2.1 Construction Waste Management Credit 4.1 Recycled content Credit 5.1 Regional Materials Innovation and Design Credits 1-4 1 Pilot Credit 43, Certified Products</p>
HQE (FR)	<p>Potential direct or indirect contribution to several points within following targets: 2. Integrated choice of products and construction materials 3. Low site nuisance 9. Acoustic comfort 10. Visual comfort 11. No unpleasant smells 12. Sanitary quality of areas 13. Sanitary air quality</p>
DGNB (D)	<p>Potential direct or indirect contribution to following criterion ENVIRONMENTAL QUALITY ENV1.2 Local Environmental Impact ECONOMIC QUALITY ECO1.1 Building-Related Lifecycle Costs ECO2.1 Efficient Use of Space SOCIOCULTURAL AND FUNCTIONAL QUALITY SOC1.2 Indoor Air Quality SOC1.3 Acoustic Comfort TECHNICAL QUALITY TEC1.5 Ease of Cleaning and Maintenance TEC1.6 Ease of Dismantling and Recycling</p>



TacTiles™

- A smarter, more sustainable way to install carpet tiles
- No need for liquid adhesives
- Fitting tiles is quick, clean and easy and the process virtually eliminates emissions
- No damage to sub floors, and nothing to stop you lifting or moving the carpet whenever you want



Entrance Matting

Incredibly tough, hard-wearing and practical; indoor entrance matting acts as the first line of defence to any interior by removing almost 100% of dirt, rain and mud before it's walked into your flooring.

Both of the products in our commercial entrance matting range – Barricade and Foyer – are resilient, functional, easy to maintain and stylish. And it's for these reasons that our barrier matting forms an essential part of any maintenance programme needed to keep your floorcovering looking its very best.