

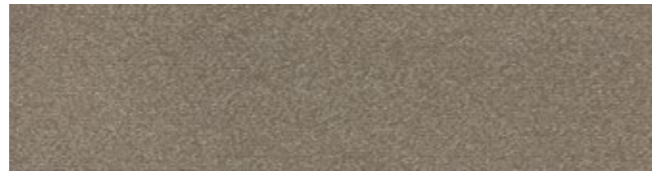
100%
Recycled
Nylon

Northern Light

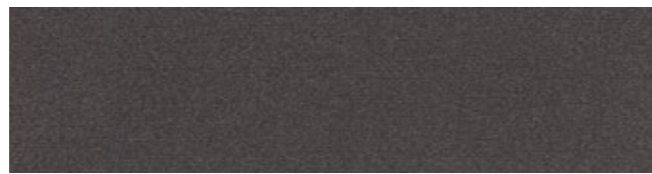
Interface®



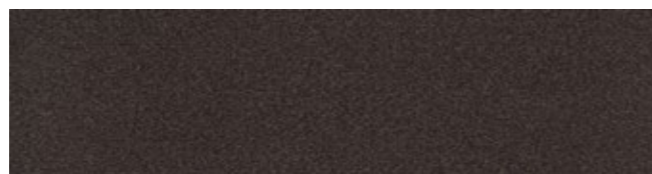
603061 Skade



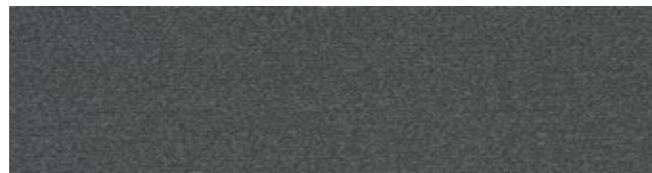
603073 Sif



603067 Magni



603064 Sleipner



603074 Frej



603075 Thor



603065 Grid



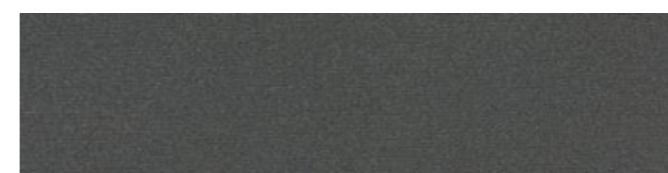
603066 Trud



603069 Idun



603070 Freja



603071 Loke



603072 Njord

Northern Light



603065 Grid & 603066 Trud

Installed: Ashlar





Product Definition	Microtuft Plain Level Loop Tile
Konstruktion	Gemusterte Microtuft-Schlingenqualität
Descripción	Moqueta modular bucle de bajo perfil (Microtuft)
Description	Dalle de moquette Microtuft à velours bouclé
Type	Microtuft bouclé
Descrizione	Microtuft verticale/disegnato

Pile Material	100% Recycled BCF Solution Dyed Nylon contains pre and post-consumer recycled content
Polfasermaterial	100% recyceltes Polyamid, enthält Anteile pre- und post-consumer recycelten Materials
Composición Fibra	100% Poliamida reciclada BCF tintada en masa con contenido reciclado pre y post consumo
Composition	Fibre polyamide BCF 100% recyclée teint en masse, contenant des éléments recyclés pré et post-consommation
Poolmateriaal	100% gerecycled Solution Dyed Polyamide BCF, bevat 100% pre- en post-consumer gerecycled content
Fibra	100% Poliammide BCF riciclata tinta in massa con contenuto riciclato pre- e post -consumer

Pile Yarn Weight / Poleinsatzgewicht / Peso Fibra / Poids de fibre / Poolinzetgewicht / Peso Felpa	520g/m ² ± 5%
Total Weight / Gesamtgewicht / Peso Total Poids total / Totaalgewicht / Peso Totale	4634g/m ² ± 5%
Total Thickness / Gesamtdicke / Espesor Total / Epaisseur totale / Totale dikte / Altezza Totale	5.2 mm ± 0.5 mm
Gauge/Ends 10 cm / Teilung x 10 cm / Galga x 10 cm / Jauge-Rangs par 10 cm / Rijen per 10 cm / Serraggio x 10 cm	5/64 – 50.4
Tufts per m² / Noppenzahl/m ² / Puntadas m ² / Densité du tuft par m ² / Aantal noppen per m ² / Densità Punti	191,520 ± 7.5%
Backing Type / Rückenkonstruktion / Soporte / Sous-couche / Ruguitvoering / Sottofondo	Graphlex®
Wear Classification / Beanspruchungsklasse / Clasificación al tráfico / Classement Gebruiksintensiteit / Resistenza all'usura	Heavy Contract (EN 1307) Class 33 / LC1

Style	60306
5m ² - 20 tiles per box (25 x 100 cm ± 0,2%)	(EN ISO 9239/1)Euroclass
Radiant Panel / Schwerentflammbarkeit	Cfl s1 (EN ISO 13501)
Hot Metal Nut	Pass, low radius of effects of ignition (BS 4790)
Dimensional Stability / Dimensionsstabilität / Estabilidad Dimensional / Stabilité dimensionnelle / Dimensionele stabiliteit / Test Stabilità dimensionale	≤ 0.2% (EN 986)

Sound Absorption					
125Hz	250Hz	500Hz	1000Hz	2000Hz	4000Hz
0.03	0.02	0.05	0.14	0.24	0.38

EN 14041

DOP: 1037/120910

textile floor covering

EN 1307

Ashlar
Installation with 2 or more colours
 Herringbone
 Rectilinear

14dB
 ≥2.4
 ≥7
 0.15

Cfl-s1
 DS
 <10%

Interface European Manufacturing BV reserve the right to change or modify specifications.

Die Interface European Manufacturing BV behält sich das Recht vor, Produktspezifikationen zu ändern oder entsprechend anzupassen.

Interface European Manufacturing BV se reserva el derecho a modificar las especificaciones arriba referenciadas.

Interface European Manufacturing BV se réserve la possibilité de modifier les caractéristiques ci-dessus.

Interface European Manufacturing BV behoudt zich het recht voor de specificaties te allen tijde aan te passen.

Interface European Manufacturing BV si riserva il diritto di modificare le proprie specifiche tecniche senza preavviso.

For full environment data, visit:
www.interface.com/eds

Visit our design blog at:
www.designwithpurposeblog.com

Light Value

Product	Colour No	Colour Name	L Value*	Y Value*
Northern Light	603061	Skade	49.5	18.0
	603064	Sleipner	25.7	4.7
	603065	Grid	43.9	13.7
	603066	Trud	40.9	11.8
	603067	Magni	31.2	6.7
	603069	Idun	44.7	14.3
	603070	Freja	42.1	12.6
	603071	Loke	32.0	7.1
	603072	Njord	23.5	4.0
	603073	Sif	46.2	15.4
	603074	Frej	32.1	7.1
603075	Thor	22.0	3.5	

* **Light Value:** L Value = L according to CIE L*a*b* colour space, Y Value = Light Reflectance Value according to BS 8493

Lichtreflexionswerte: L-Wert = L gemäß CIE L*a*b* Farbspektrum, Y-Wert = Lichtreflexionswert gemäß British Standard BS 8493

Valores de Reflectancia de Luz: Valor L = L según CIE L*a*b* espacio de color, Valor Y = Valor de reflectancia de luz según el estándar británico BS 8493

Valeurs concernant la lumière: Valeur L = L faisant référence à la méthode CIE L*a*b* pour la couleur, Valeur Y = Valeurs de réflectance de la lumière selon le British Standard BS 8493

Licht waarden: L Waarde = L volgens CIE L*a*b*kleurruimte, Y Waarde = Licht Reflectie Waarde volgens BS 8493

Indici di riflettanza alla luce: Indice L = L secondo CIE L*a*b* colour space, Indice Y = Indice di riflettanza alla luce secondo la norma BS 8493

Environmental Data Sheet

Construction			
Yarn system	BCF Solution Dyed Nylon (PA6)		
Backing system	Graphlex*		
Recycled Content	Total	Pre Consumer	Post Consumer
Yarn average	100,00%	50,00%	50,00%
Product average	53,25%	47,44%	5,81%
Recycled content can be subject to differences between colours. See details for individual colours on next page.			
Carbon Footprint			
Global Warming Potential (kgs CO ₂ equivalents/sq meter)			
Full life-cycle carbon footprint (following our EPD results or EPD calculation method)	Raw materials and Production:	6.19 kg CO ₂ eq./m ²	
	Delivery and installation:	0.63 kg CO ₂ eq./m ²	
	Use (10 years):	2.85 kg CO ₂ eq./m ²	
	End of life (waste to energy):	7.90 kg CO ₂ eq./m ²	
	TOTAL (10 years' lifetime):	17.57 kg CO ₂ eq./m ²	
CO ₂ compensation	Carbon neutral Cool Carpet* is standard		
Manufacturing			
Location	Scherpenzeel, NL Factory is certified ISO 14001 since 1996 and ISO 9001 since 1990		
Installation Impacts			
TacTiles™	Optimised for glue-free installation with TacTiles™ connectors with virtually zero VOCs		
Installation Waste	In a typical installation* using the installation method below:		
	Ashlar - 3-5% installation waste		
	Herringbone - 3-5 % installation waste		
For reference: 2 metre wide broadloom typically generates 7-10 % installation waste			
* In a rectangular building, installed before walls.			
End-of-life			
Alternatives to landfill	Reuse: Can be cleaned and reused in a non-critical location to extend its useful life		
	Recycling: Can be returned through the Interface ReEntry scheme and be re-used as raw material in new carpet tiles		
	Waste-to-Energy: Can be incinerated in appropriate waste to energy plant		
Indoor Air Quality			
GUT (Gemeinschaft umweltfreundlicher Teppichboden)	The product passes all requirements of GUT's testing criteria regarding hazardous substances, emissions and odour. GUT PRODIS certificate : Applied for		
CRI (Carpet & Rug Institute)	Compliant to LEED IQ 4.3 credit (tested in Eurofins to the equivalent test of the CRI Green Label Plus)		
Compliance to Green Building Schemes			
	See next page to check how our products contribute to the main green building certification schemes (BREEAM, LEED, HQE and DGNB)		
Type III Environmental Product Declaration			
EPD according to ISO 14025	This product is covered by the Environmental Product Declaration EPD-IFF-2012831-E		

Recycled content – colour level						
Colourway	Total Recycled Content	Pre consumer recycled content	Post consumer recycled content	Total yarn recycled content	Yarn pre-consumer	Yarn post-consumer
603061 Skade	53,3%	47,4%	5,8%	100,00%	50,00%	50,00%
603064 Sleipner	53,3%	47,4%	5,8%	100,00%	50,00%	50,00%
603065 Grid	53,3%	47,4%	5,8%	100,00%	50,00%	50,00%
603066 Trud	53,3%	47,4%	5,8%	100,00%	50,00%	50,00%
603067 Magni	53,3%	47,4%	5,8%	100,00%	50,00%	50,00%
603069 Idun	53,3%	47,4%	5,8%	100,00%	50,00%	50,00%
603070 Freja	53,3%	47,4%	5,8%	100,00%	50,00%	50,00%
603071 Loke	53,3%	47,4%	5,8%	100,00%	50,00%	50,00%
603072 Njord	53,3%	47,4%	5,8%	100,00%	50,00%	50,00%
603073 Sif	53,25%	47,44%	5,81%	100,00%	50,00%	50,00%
603074 Frej	53,3%	47,4%	5,8%	100,00%	50,00%	50,00%
603075 Thor	53,3%	47,4%	5,8%	100,00%	50,00%	50,00%

Compliance to Green Building Schemes	
BREEAM (UK and international)	BRE Green Guide Ratings: Office - Not Available Education - Not Available Health Care - Not Available Retail (by fashion) - Not Available Potential contribution to following categories and credits: Hea 02 - Indoor air quality – minimising sources of air pollution Hea 05 - Acoustic Performance Mat 01 - Life Cycle Impacts Mat 05 - Designing for robustness Wst 01 - Construction Waste Management
LEED 2009 US	Potential direct or indirect contribution to following categories and credits: Indoor Environmental Quality Credit 4.1 Low Emitting Materials: Adhesive & Sealants Credit 4.3 Low Emitting Materials: Carpet Systems Materials and Resources Credit 2.1 Construction Waste Management Credit 4.1 Recycled content Credit 5.1 Regional Materials Innovation and Design Credits 1-4 1 Pilot Credit 43, Certified Products
HQE (FR)	Potential direct or indirect contribution to several points within following targets: 2. Integrated choice of products and construction materials 3. Low site nuisance 9. Acoustic comfort 10. Visual comfort 11. No unpleasant smells 12. Sanitary quality of areas 13. Sanitary air quality
DGNB (D)	Potential direct or indirect contribution to following criterion ENVIRONMENTAL QUALITY ENV1.2 Local Environmental Impact ECONOMIC QUALITY ECO1.1 Building-Related Lifecycle Costs ECO2.1 Efficient Use of Space SOCIOCULTURAL AND FUNCTIONAL QUALITY SOC1.2 Indoor Air Quality SOC1.3 Acoustic Comfort TECHNICAL QUALITY TEC1.5 Ease of Cleaning and Maintenance TEC1.6 Ease of Dismantling and Recycling



TacTiles™

- A smarter, more sustainable way to install carpet tiles
- No need for liquid adhesives
- Fitting tiles is quick, clean and easy and the process virtually eliminates emissions
- No damage to sub floors, and nothing to stop you lifting or moving the carpet whenever you want



Entrance Matting

Incredibly tough, hard-wearing and practical; indoor entrance matting acts as the first line of defence to any interior by removing almost 100% of dirt, rain and mud before it's walked into your flooring.

Both of the products in our commercial entrance matting range – Barricade and Foyer – are resilient, functional, easy to maintain and stylish. And it's for these reasons that our barrier matting forms an essential part of any maintenance programme needed to keep your floorcovering looking its very best.