

A close-up photograph of a mechanical watch movement. The image shows various gears, jewels, and metal components. A diamond-tipped tool is positioned on a metal plate, likely for precision work. The lighting is dramatic, highlighting the intricate details of the watch mechanism. The text "Syncopation II" is overlaid on the left side of the image.

Syncopation II

Interface®



324100 Balance



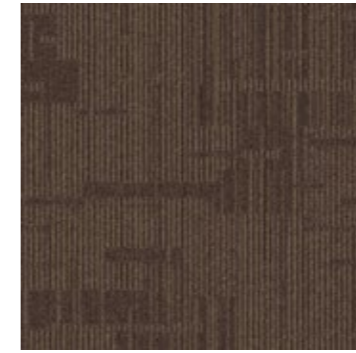
324101 Composition



324102 Frequency



324103 Harmonise



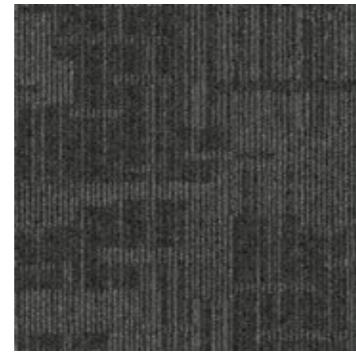
324104 Symphony



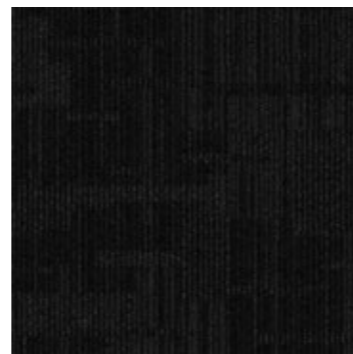
324105 Scale



324106 Repetition



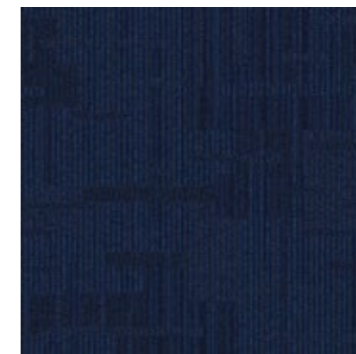
324107 Double Time



324108 Pitch



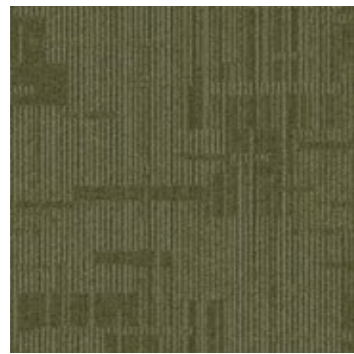
324109 Clave



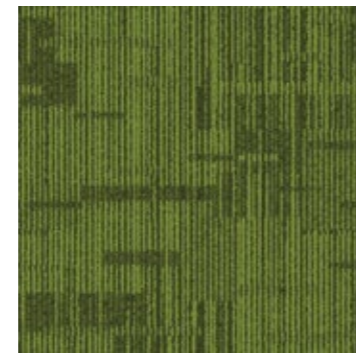
324110 Blues



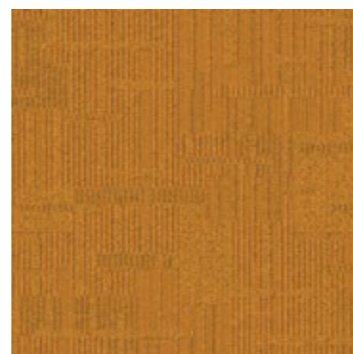
324111 Upbeat



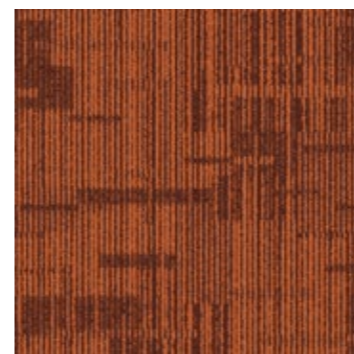
324112 Quick Step



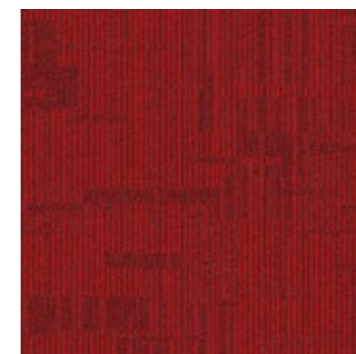
324113 Electronic



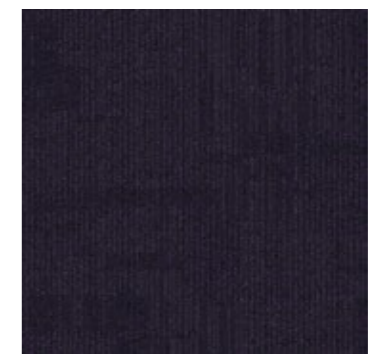
324114 Samba



324116 Groove



324117 Reggae



324118 Drum & Bass





324110 Blues

Installed: Quarter Turn



324107 Double Time

Installed: Ashlar

Product Definition	Tufted Cut and Loop Tile
Konstruktion	Getuftete Schlingen-Velours-Qualität
Descripción	Moqueta modular tufting pelo cortado y bucle
Description	Dalle de moquette à velours tufté bouclé et coupé
Type	Tegeltapijt met een combinatie van gesneden- en lussenpool
Descrizione	Velluto e bouclé tufted strutturato

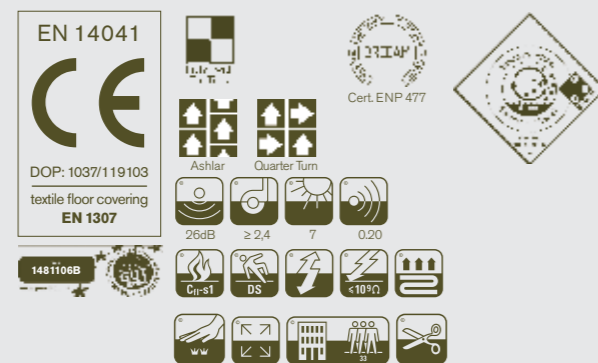
Pile Material	100% BCF Solution Dyed Nylon contains pre- and post-consumer recycled content
Polfasermaterial	100% Polyamid garngefärbt mit recyceltem Anteil (Präund Post-Konsumenten-Anteil)
Composición Fibra	100% Poliamida BCF tintada en masa con contenido reciclado pre y post-consumo
Composition	100% Polyamide BCF Teint en masse contenant des éléments recyclés pré et post-consommation
Poolmaterial	100% Solution Dyed Polyamide BCF, bevat pre- en post-consumer gerecycled content
Fibra	100% Poliammide BCF tinta in massa con contenuto riciclato pre- e post - consumer

Pile Yarn Weight / Poleinsatzgewicht / Peso Fibra / Poids de fibre / Poolinsetgewicht / Peso Felpa	910g/m ² ± 5%
Total Weight / Gesamtgewicht / Peso Total Poids total / Totaalgewicht / Peso Totale	4694g/m ² ± 5%
Pile Height / Polschichtdicke / Altura Fibra / Hauteur de la fibre / Poolhoogte / Altezza Felpa	4,0 mm ± 0,3 mm
Total Thickness / Gesamtdicke / Espesor Total / Epaisseur totale / Totale dikte / Altezza Totale	8,0 mm ± 0,5 mm
Gauge/Ends 10 cm / Teilung x 10 cm / Galga x 10 cm / Jauge-Rangs par 10 cm / Rijen per 10 cm / Serraggio x 10 cm	5/64 – 50,4
Tufts per m² / Noppenzahl/m ² / Puntadas m ² / Densité du tuft par m ² / Aantal noppen per m ² / Densità Punti	186,480 ± 5%
Backing Type / Rückenkonstruktion / Soporte / Sous-couche / Rugitvoering / Sottofondo	Graphlex®
Wear Classification / Beanspruchungsklasse / Clasificación al tráfico / Classement Gebruiksintensiteit / Resistenza all'usura	Heavy Contract (EN 1307) Class 33 / LC2

Style	32411
4m ² - 16 tiles per box (50 x 50 cm ± 0,15%)	

Radiant Panel / Schwerentflammbarkeit	(EN ISO 9239/1) Euroclass Cfl s1 (EN ISO 13501)
Hot Metal Nut	Pass, low radius of effects of ignition (BS 4790)
Dimensional Stability / Dimensionsstabilität / Estabilidad Dimensional / Stabilité dimensionnelle / Dimensionele stabiliteit / Test Stabilità dimensionale	≤ 0,2% (ISO 2551 / EN 986)

Sound Absorption					
125Hz	250Hz	500Hz	1000Hz	2000Hz	4000Hz
0.04	0.03	0.07	0.24	0.33	0.42



Light Value

Product	Colour No	Colour Name	L Value*	Y Value*
Syncopation II	324100	Balance	60.16	28.3
	324101	Composition	55.02	22.95
	324102	Frequency	48.98	17.58
	324103	Harmonise	39.98	10.65
	324104	Symphony	36.17	9.1
	324105	Scale	19.58	2.89
	324106	Repetition	44.87	14.45
	324107	Double Time	33.83	7.93
	324108	Pitch	19.66	2.9
	324109	Clave	23.04	3.81
	324110	Blues	22.17	3.56
	324111	Upbeat	20.75	3.18
	324112	Quick Step	38.75	10.52
	324113	Electronic	43.48	13.48
	324114	Samba	52.5	20.59
	324116	Groove	40.08	11.3
	324117	Reggae	32.52	7.32
	324118	Drum & Bass	21.33	3.33
	9199	Buffalo	25.8	4.7

* **Light Value:** L Value = L according to CIE L*a*b* colour space, Y Value = Light Reflectance Value according to BS 8493
Lichtreflexionswerte: L-Wert = L gemäß CIE L*a*b* Farbspektrum, Y-Wert = Lichtreflexionswert gemäß British Standard BS 8493
Valores de Reflectancia de Luz: Valor L = L según CIE L*a*b* espacio de color, Valor Y = Valor de reflectancia de luz según el estándar británico BS 8493
Valeurs concernant la lumière: Valeur L = L faisant référence à la méthode CIE L*a*b* pour la couleur, Valeur Y = Valeurs de réflectance de la lumière selon le British Standard BS 8493
Licht waarden: L Waarde = L volgens CIE L*a*b*kleurruimte, Y Waarde = Licht Reflectie Waarde volgens BS 8493
Indici di riflettanza alla luce: Indice L = L secondo CIE L*a*b* colour space, Indice Y = Indice di riflettanza alla luce secondo la norma BS 8493

Environmental Data Sheet

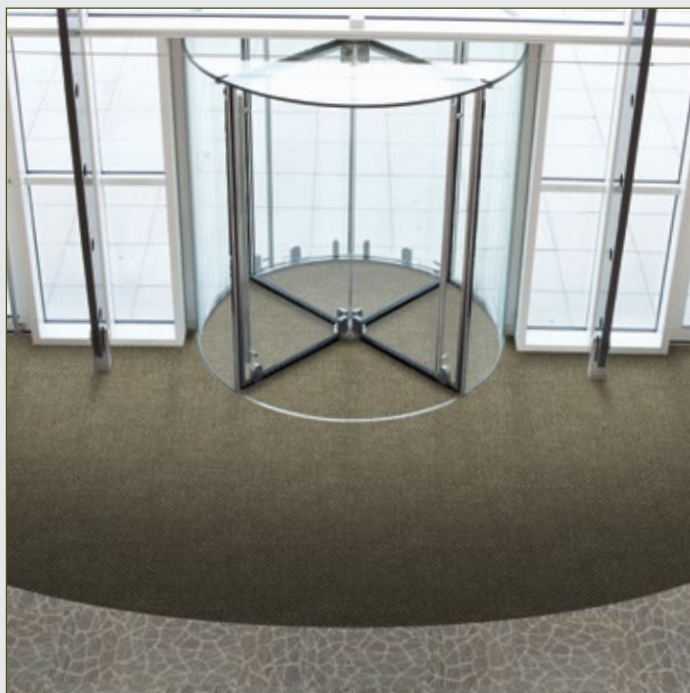
Construction			
Yarn system	100% BCF Solution Dyed PA 6		
Backing system	Graphlex®		
Recycled Content	Total	Pre-consumer recycled content	Post-consumer recycled content
Product average	63 %	53.9 %	9.1 %
Yarn	97.22%	48.61 %	48.61 %
Recycled content can be subject to differences between colours. See details for individual colours on next page.			
Carbon Footprint			
Global Warming Potential (kgs CO ₂ equivalents/sq meter)			
Full life-cycle carbon footprint (following our EPD results or EPD calculation method)	Raw materials and Production:	9.59 kg CO ₂ eq./m ²	
	Delivery and installation:	0.77 kg CO ₂ eq./m ²	
	Use (10 years):	2.92 kg CO ₂ eq./m ²	
	End of life (waste to energy):	8.95 kg CO ₂ eq./m ²	
	TOTAL (10 years' lifetime):	22.23 kg CO ₂ eq./m ²	
CO ₂ compensation	Carbon neutral Cool Carpet® is optional		
Manufacturing			
Location	Scherpenzeel, NL Factory is certified ISO 14001 since 1996 and ISO 9001 since 1990		
Installation Impacts			
TacTiles™	Optimised for glue-free installation with TacTiles™ connectors with virtually zero VOCs		
Installation Waste	In a typical installation* using the installation method below:		
	Quarter turn – 3-4% installation waste		
	Ashlar – 3-5% installation waste		
	For reference: 2 metre wide broadloom typically generates 7-10 % installation waste		
* In a rectangular building, installed before walls.			
End-of-life			
Alternatives to landfill	Reuse: Can be cleaned and reused in a non-critical location to extend its useful life		
	Recycling: Can be returned through the Interface ReEntry scheme and be re-used as raw material in new carpet tiles		
	Waste-to-Energy: Can be incinerated in appropriate waste to energy plant		
Indoor Air Quality			
GuT (Gemeinschaft umweltfreundlicher Teppichboden)	The product passes all requirements of GuT's testing criteria regarding hazardous substances, emissions and odour. Certificate no. 25029		
CRI (Carpet & Rug Institute)	Compliant to the requirements of the Green Label Plus programme.		
Compliance to Green Building Schemes			
See next page for potential contribution to various green building certification schemes			
Type III Environmental Product Declaration			
EPD according to ISO 14025	This product has a type III Environmental Product Declaration, EPD-IFF-20120023-CBD1-EN		

Recycled content – colour level						
Colourway	Total recycled content %	Total pre consumer recycled content %	Total post consumer recycled content %	Yarn recycled content %	Yarn pre consumer recycled content	Yarn post consumer recycled content
324100 Balance	63,07%	53,71%	9,36%	100,00%	50,00%	50,00%
324101 Composition	63,07%	53,71%	9,36%	100,00%	50,00%	50,00%
324102 Frequency	63,07%	53,71%	9,36%	100,00%	50,00%	50,00%
324103 Harmonise	63,88%	54,52%	9,36%	100,00%	50,00%	50,00%
324104 Symphony	63,88%	54,52%	9,36%	100,00%	50,00%	50,00%
324105 Scale	63,88%	54,52%	9,36%	100,00%	50,00%	50,00%
324106 Repetition	63,07%	53,71%	9,36%	100,00%	50,00%	50,00%
324107 Double time	63,88%	54,52%	9,36%	100,00%	50,00%	50,00%
324108 Pitch	63,88%	54,52%	9,36%	100,00%	50,00%	50,00%
324109 Clave	63,88%	54,52%	9,36%	100,00%	50,00%	50,00%
324110 Blues	63,88%	54,52%	9,36%	100,00%	50,00%	50,00%
324111 Upbeat	63,88%	54,52%	9,36%	100,00%	50,00%	50,00%
324112 Quick Step	53,71%	49,03%	4,68%	50,00%	25,00%	25,00%
324113 Electronic	63,07%	53,71%	9,36%	100,00%	50,00%	50,00%
324114 Samba	63,07%	53,71%	9,36%	100,00%	50,00%	50,00%
324116 Groove	63,07%	53,71%	9,36%	100,00%	50,00%	50,00%
324117 Reggae	63,88%	54,52%	9,36%	100,00%	50,00%	50,00%
324118 Drum & Bass	63,88%	54,52%	9,36%	100,00%	50,00%	50,00%
Compliance to Green Building Schemes						
BREEAM (UK and international)	BRE Green Guide Ratings: Office - A rated Education - A+ rated Health Care - A+ rated Retail (by fashion) - A+ rated Potential contribution to following categories and credits: Hea 02 - Indoor air quality – minimising sources of air pollution Hea 05 - Acoustic Performance Mat 01 - Life Cycle Impacts Mat 05 - Designing for robustness Wst 01 - Construction Waste Management					
LEED 2009 US	Potential direct or indirect contribution to following categories and credits: Indoor Environmental Quality Credit 4.1 Low Emitting Materials: Adhesive & Sealants Credit 4.3 Low Emitting Materials: Carpet Systems Materials and Resources Credit 2.1 Construction Waste Management Credit 4.1 Recycled content Credit 5.1 Regional Materials Innovation and Design Credits 1-4 1 Pilot Credit 43, Certified Products					
HQE (FR)	Potential direct or indirect contribution to several points within following targets: 2. Integrated choice of products and construction materials 3. Low site nuisance 9. Acoustic comfort 10. Visual comfort 11. No unpleasant smells 12. Sanitary quality of areas 13. Sanitary air quality					
DGNB (D)	Potential direct or indirect contribution to following criterion ENVIRONMENTAL QUALITY ENV1.2 Local Environmental Impact ECONOMIC QUALITY ECO1.1 Building-Related Lifecycle Costs ECO2.1 Efficient Use of Space SOCIOCULTURAL AND FUNCTIONAL QUALITY SOC1.2 Indoor Air Quality SOC1.3 Acoustic Comfort TECHNICAL QUALITY TEC1.5 Ease of Cleaning and Maintenance TEC1.6 Ease of Dismantling and Recycling					



TacTiles™

- A smarter, more sustainable way to install carpet tiles
- No need for liquid adhesives
- Fitting tiles is quick, clean and easy and the process virtually eliminates emissions
- No damage to sub floors, and nothing to stop you lifting or moving the carpet whenever you want



Entrance Matting

Incredibly tough, hard-wearing and practical; indoor entrance matting acts as the first line of defence to any interior by removing almost 100% of dirt, rain and mud before it's walked into your flooring.

Both of the products in our commercial entrance matting range – Barricade and Foyer – are resilient, functional, easy to maintain and stylish. And it's for these reasons that our barrier matting forms an essential part of any maintenance programme needed to keep your floorcovering looking its very best.